

Before Cleaning



Blank
pH = 7.7



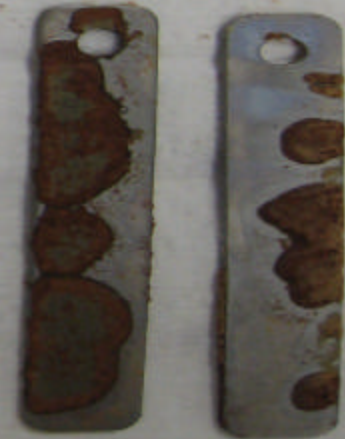
300 ppm AS 8310
pH = 7.7



400 ppm AS 8310
pH = 7.7



9 ppm orthophosphate, 1.5 ppm zinc
pH = 7.7



18 ppm orthophosphate, 3.0 ppm zinc
pH = 7.7

After Cleaning



Blank
pH = 7.7



300 PPM AS 8310
pH = 7.7



400 PPM AS 8310
pH = 7.7



9 PPM orthophosphate, 1.5 ppm zinc
pH = 7.7



18 PPM orthophosphate, 3.0 ppm zinc
pH = 7.7